

MAP OF  
 BELLENGER HIGHLANDS  
 SW 1/4 -  
 SITUATED IN NE CORNER 1 SE 1/4 SEC. 5 T 12 S R 6 E  
 GADSDEN, ALA.

HILL & WILSON C.E.

FEBRUARY 12, 1907

SCALE: 1" = 100'

I, E. D. Jordan, Notary Public in and for said State and County hereby certify that W. G. Belenger, who is known and acknowledged before me on this day that being informed of the contents of the conveyance he signed same voluntarily.  
 Given under my hand this 21st day of February, 1907.

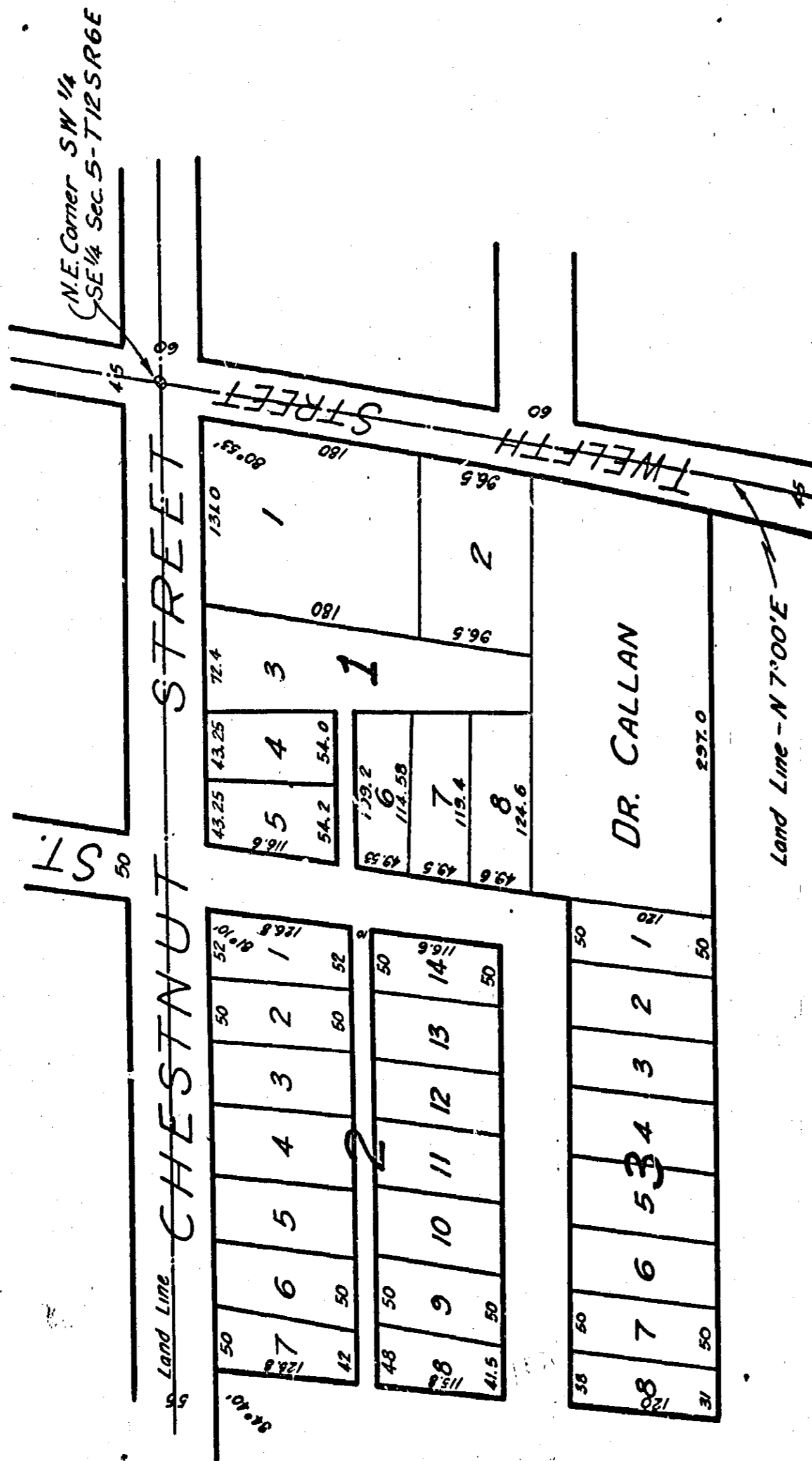
E. D. Jordan  
 Notary Public

I, W. G. Belenger, the sole owner of Blocks 1, 2, & 3 of this plat hereby adopt and confirm same as platted.

W. G. Belenger

I, W. Hill a Civil Engineer & Surveyor hereby certify this to be a correct map as surveyed and platted by me this the 12th day of February, 1907.

William Hill



Filed in office for record in the City of Gadsden, Ala. on the 12th day of February, 1907 at 10:00 A.M. and duly recorded this day at 10:00 A.M. 1907. W. G. Belenger, Judge of Probate