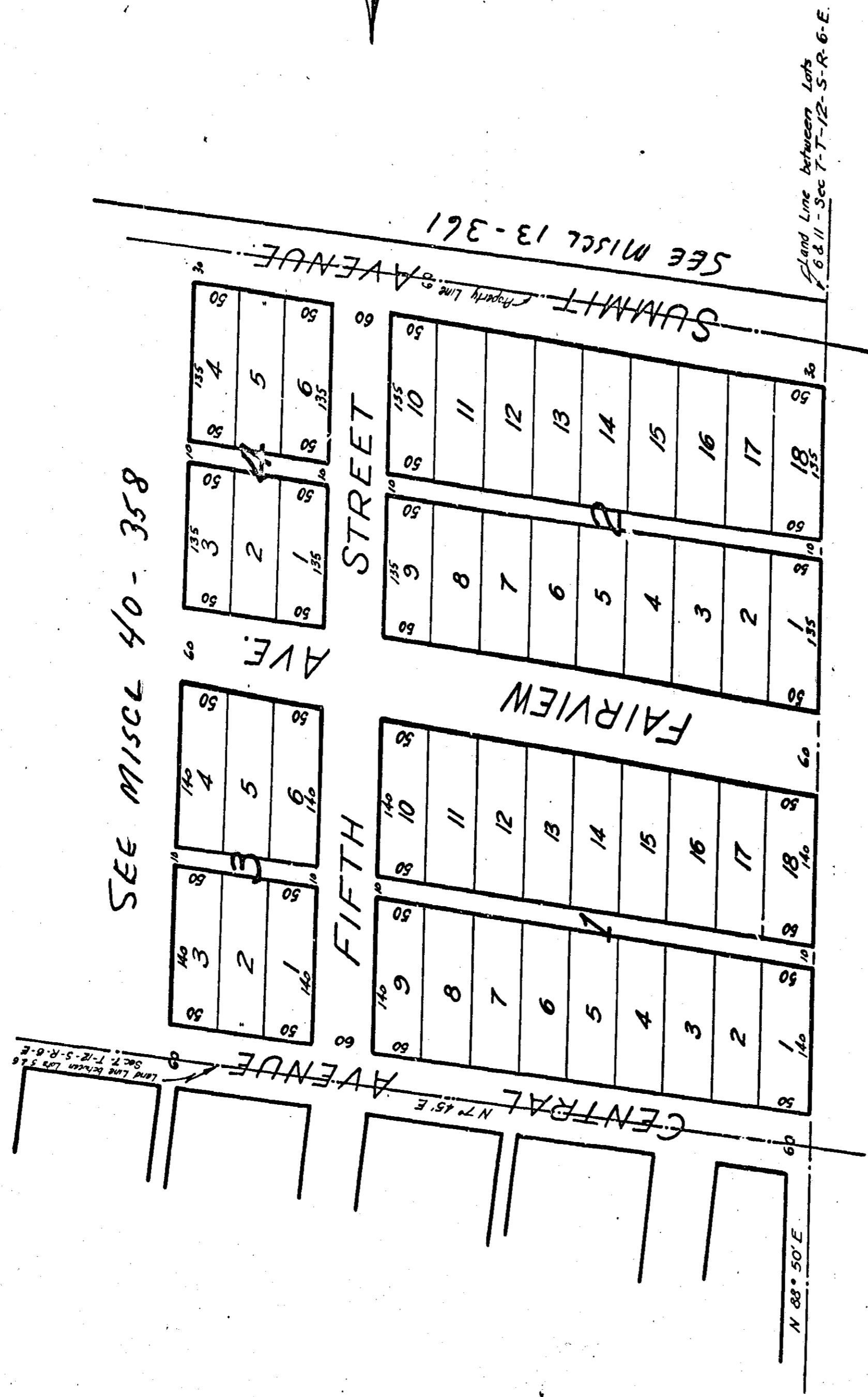


MAP OF
MOORE & HOPSONS ADDITION
TO SOUTH HIGHLANDS SUBDIVISION

SCALE: 1"=100'

FEBRUARY 2, 1907

HILL & WILSON, ENGRS.



State of Alabama
 Etowah County
 I, J. M. Hill, a Civil Engineer
 and Surveyor hereby certify
 this to be correct map as
 surveyed or plotted by me
 this 7th day of February,
 1907.

J. M. Hill

Filed in office for record on the 7th day
 of February A. D. 1907 at 11 o'clock
 P. M. and duly recorded this 23rd day of
 February 1907.
 J. W. Deane
 Judge of Probate