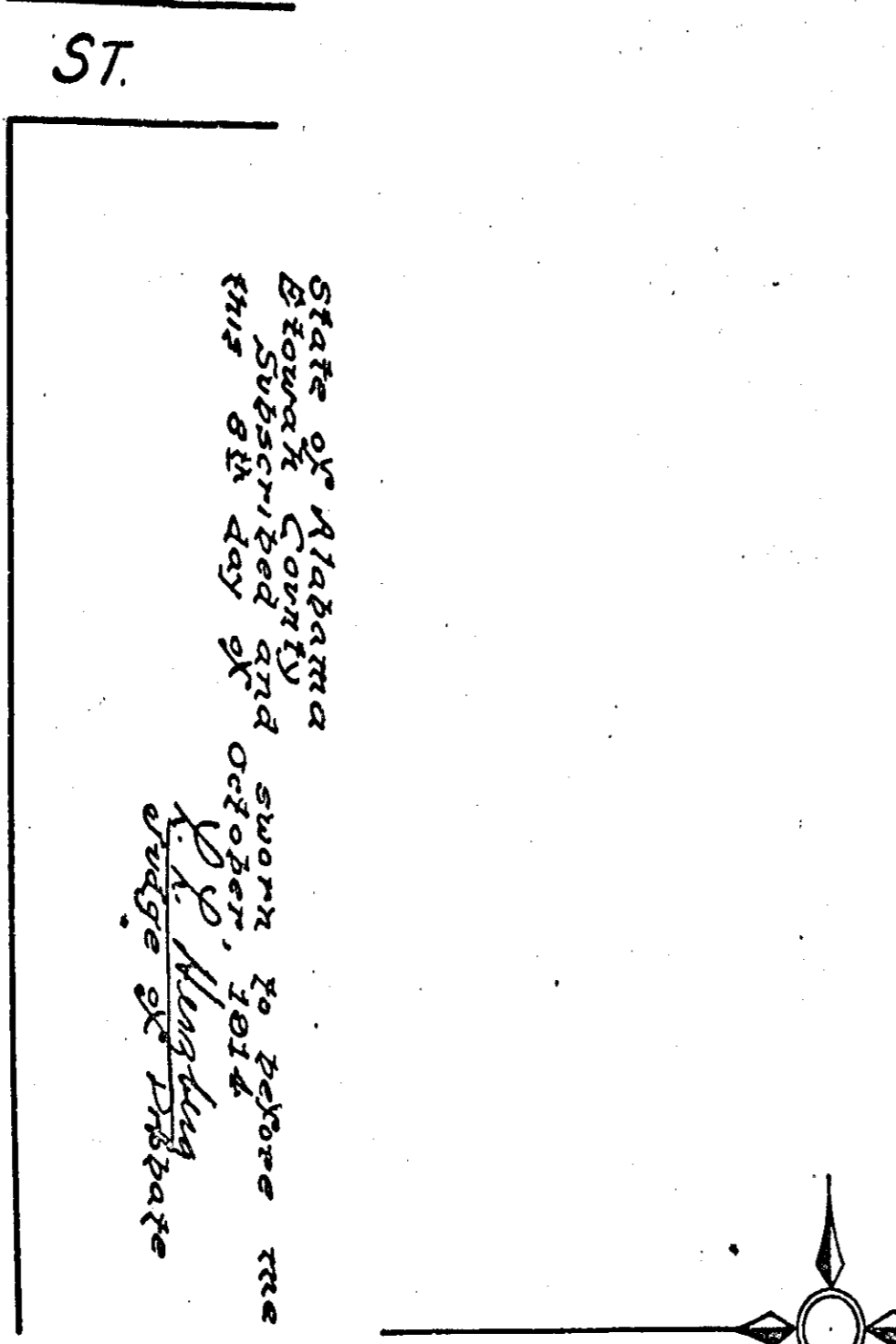
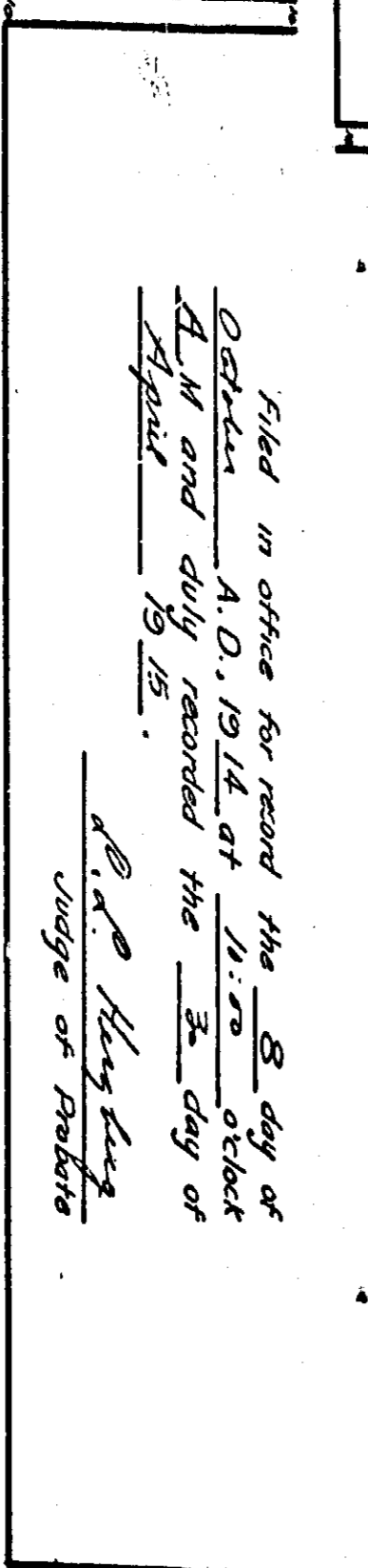
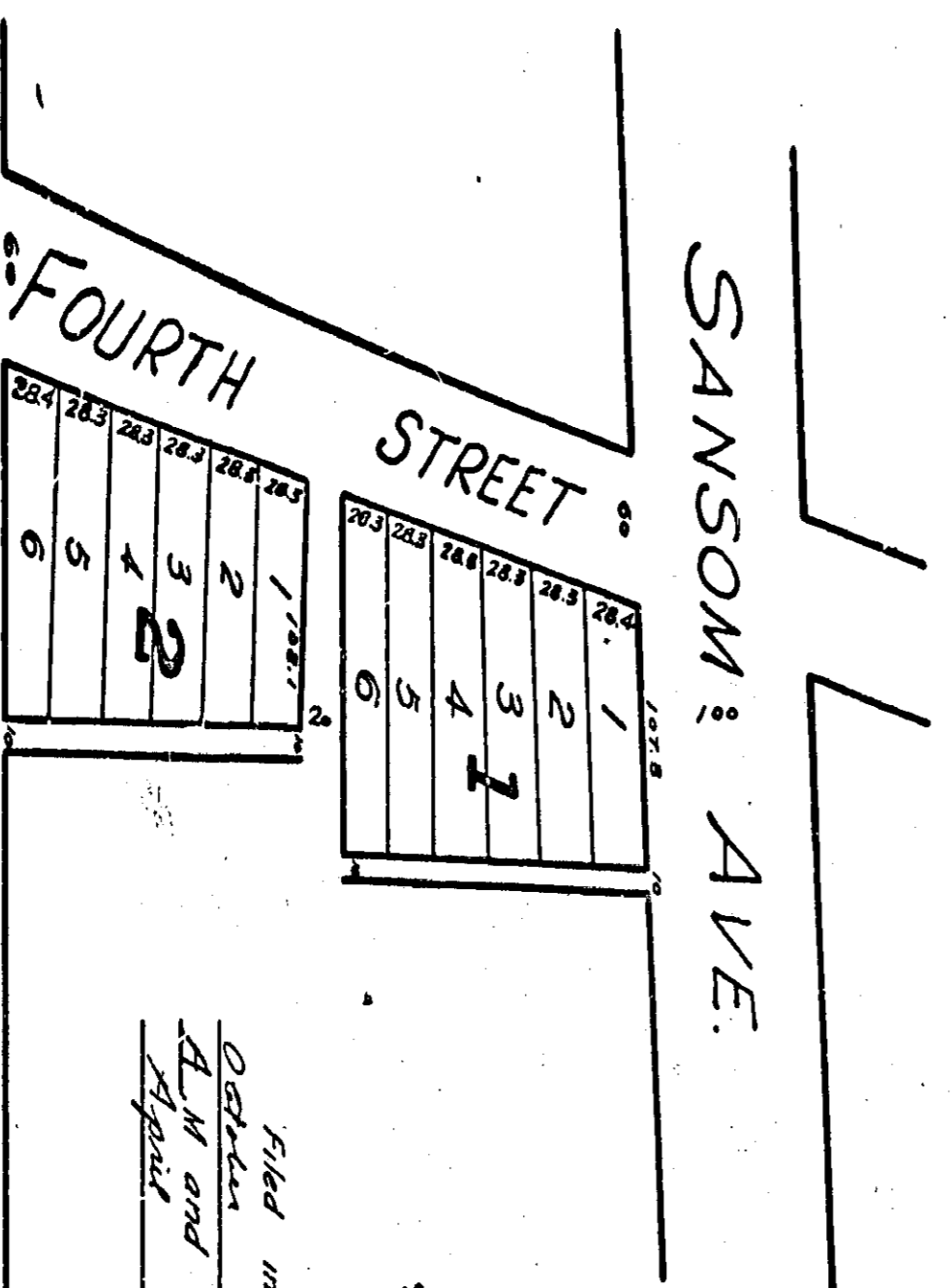
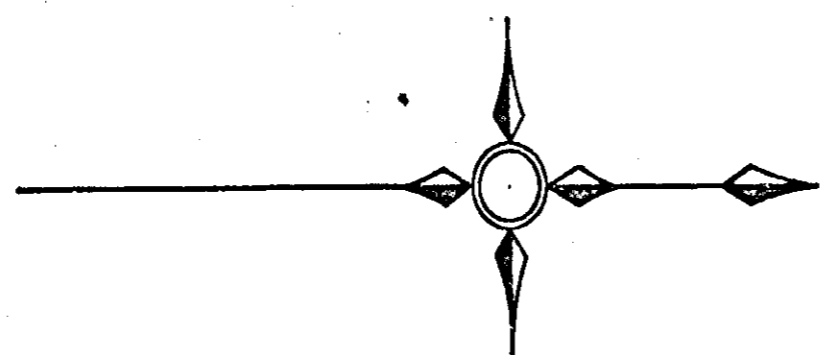


KYLES REARRANGEMENT OF
BLOCKS 11 & 20 AND LOTS 26-27-28-29 BLOCK 5
OF KYLE ADDITION
TO ALABAMA CITY, ALA.

REF. PLAT BOOK 'A' PP. 211



Filed in office for record the 8 day of October A.D. 1914 at 11.22 o'clock A.M. and duly recorded the 3 day of April 1915.

D. P. Huggins
Judge of Probate

State of Alabama
Browns County sworn to before me this 8th day of October, 1914.

D. P. Huggins
Judge of Probate

State of Alabama
Stoughton County hereby certifies this to be a true and correct copy of the plat of the Kyle Addition and the rearrangement of blocks and lots in said Kyle Addition as shown on the map, plat and book 'A' page 211.

The Kyle Real Estate & Bldg. Co.
By: D. B. Hill
President

State of Alabama
Stoughton County hereby certifies that the within copy of the Kyle Addition and the rearrangement of blocks and lots in said Kyle Addition as shown on the map, plat and book 'A' page 211, is a true and correct copy of the original plat of the Kyle Addition and the rearrangement of blocks and lots in said Kyle Addition as shown on the map, plat and book 'A' page 211.

D. P. Huggins
Judge of Probate