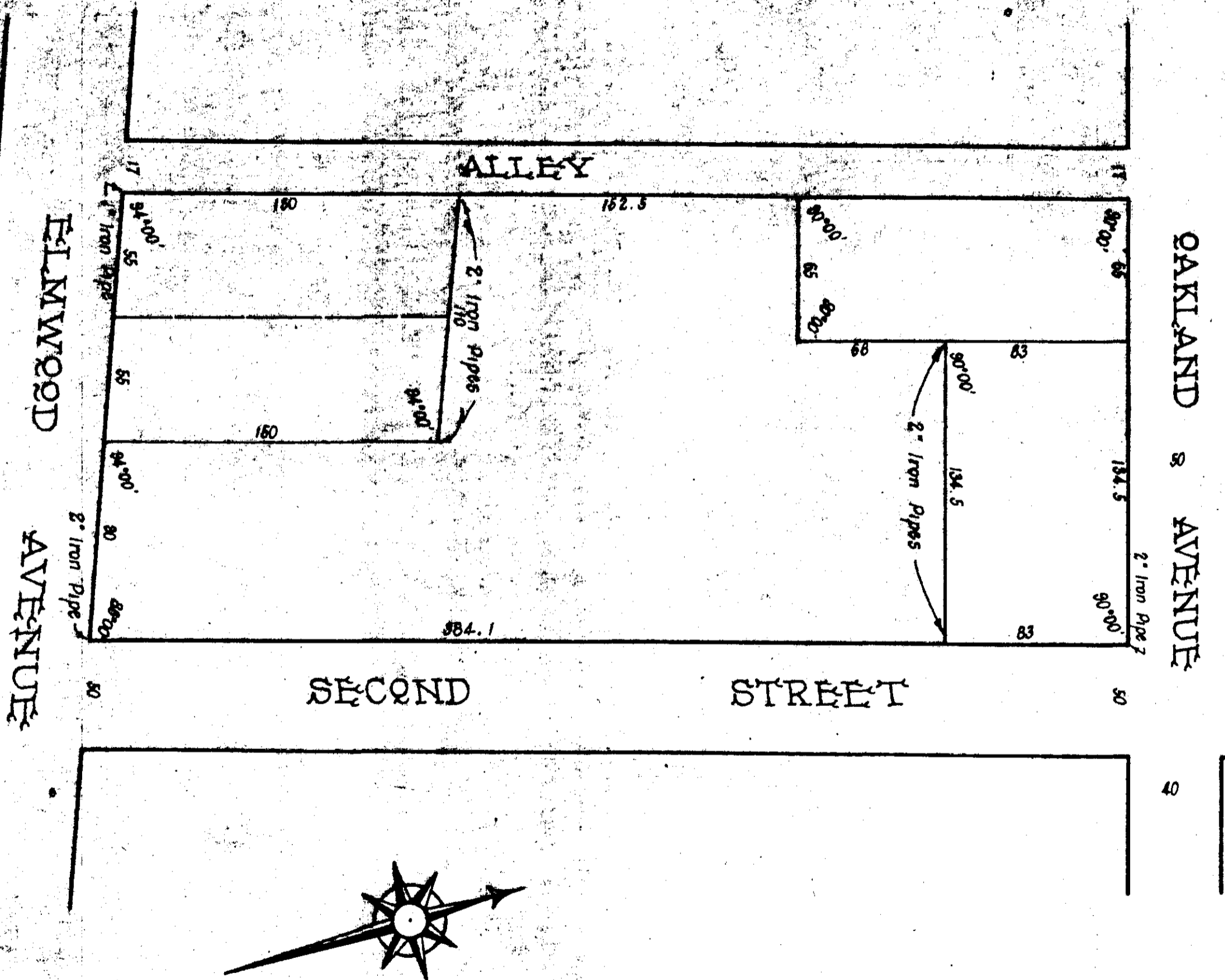


EAST HALF BLOCK 3 ELMWOOD N. DIVISION

E. H. LEE, C. E. & SURVEYOR
GADSDEN, ALA. ... OCTOBER 20, '38



1. E. H. Lee, a Civil Engineer & Surveyor hereby certifies that I made a survey of the property contained in the within map, and that the said Survey and Map are true and correct as shown. That in red being the property of J. P. Glann. This October 20, 1938.
E. H. Lee

Note by recorder: Property of J. P. Glann is shown by dashed double line instead of red line.

Filed in office for record on 21 day of October, 1938 at 5 o'clock P.M. and duly recorded the 1st day of November, 1938.
E. L. Hurst,
Judge of Probate