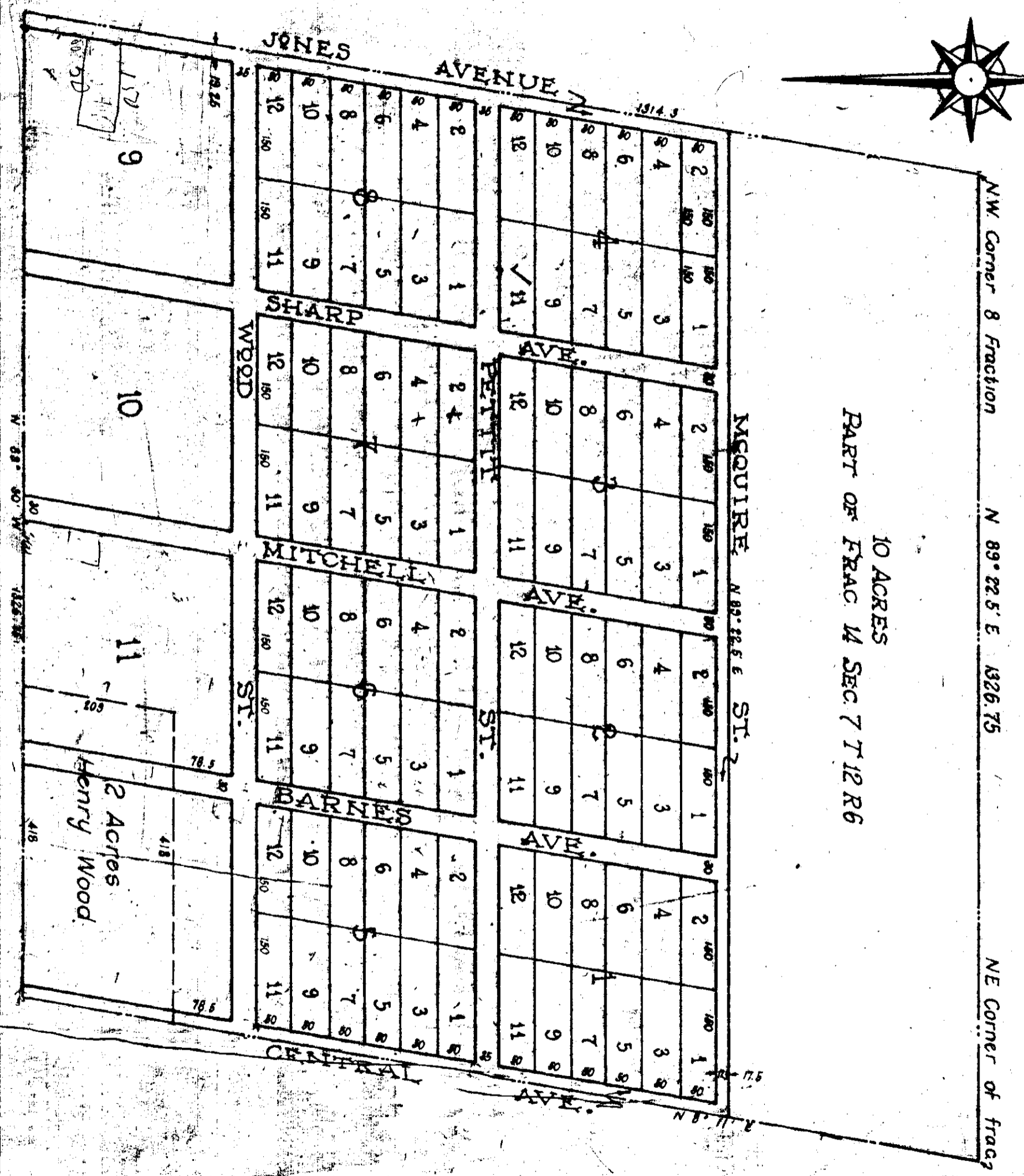
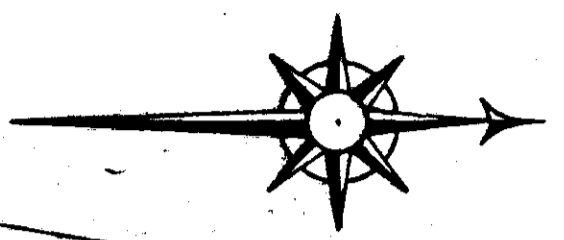


# STEEL PLANT ADDITION

To ALABAMA CITY, ALA.



I hereby certify that this is a true and correct description of the property here set forth as surveyed by me April, 1903.

T. W. Lister, C. E.

Filed in office for record on the 21 day of May A. D. 1903 at 5 o'clock P. M. and duly recorded the 23 day of May, 1903.

J. H. Lovejoy  
Judge of Probate

81.11