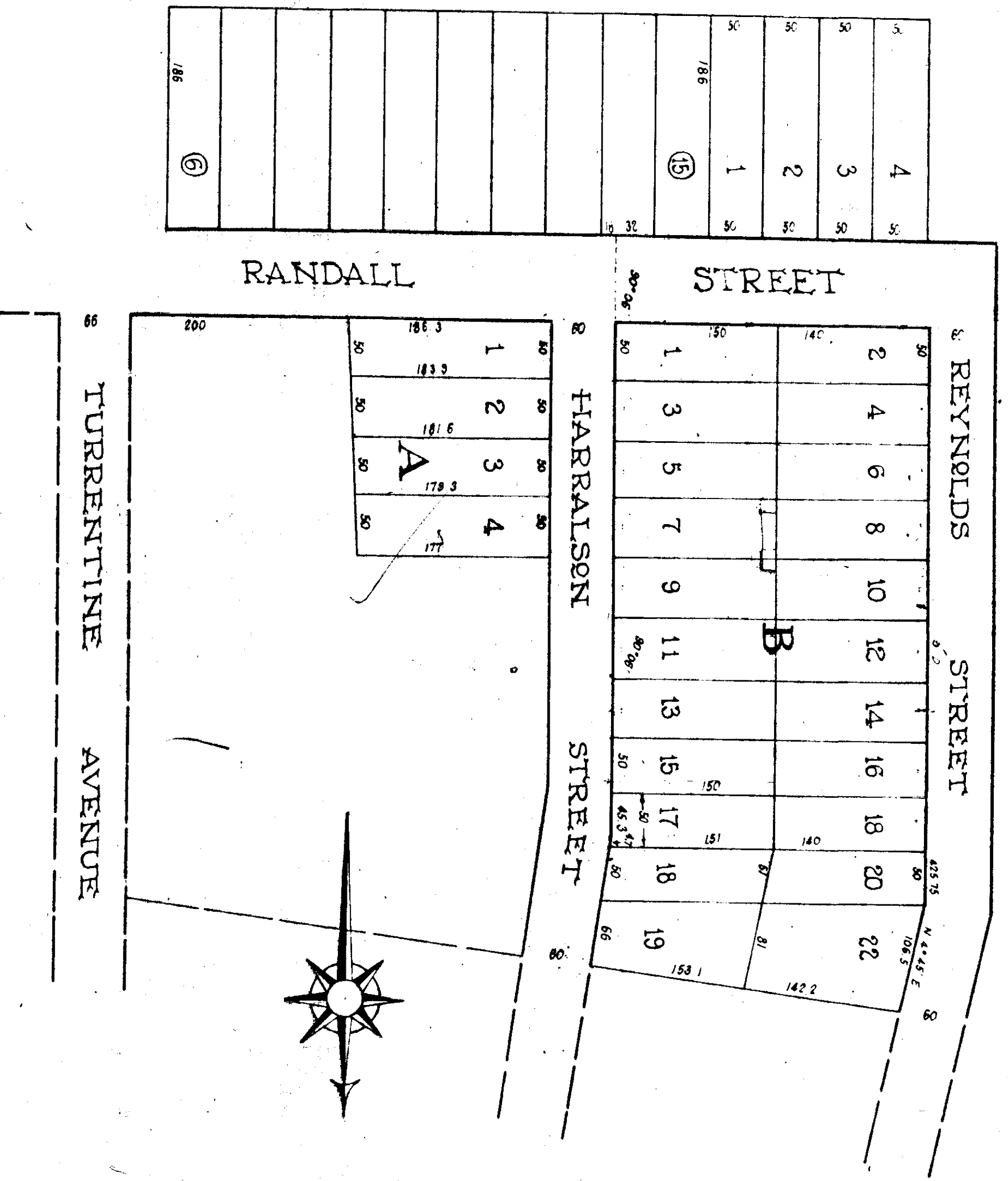


M. A. STOCKS PROPERTY

BEING A PART OF SW 1/4 - NW 1/4 SEC 9 TP 12
R 6 E. GADSDEN, ETOWAH COUNTY, ALABAMA
SCALE: 1"=100'



The State of Alabama, Etowah County
 I, J. A. Tallman, Judge of Probate in and for said County and State, hereby certify that M. A. Stocks, owner of the land described on the plat made by P. S. Fitzgerald, Surveyor, hereby ratify and adopt the same as correct. Given under my hand this the 27th day of July, 1892.
 M. A. Stocks (Seal)
 Witness: G. W. Webb

The State of Alabama, Etowah County
 I, J. A. Tallman, Judge of Probate in and for said County and State, hereby certify that M. A. Stocks, whose name is signed to the foregoing declaration and who is known to me, acknowledged voluntarily on the day that being informed of the contents of declaration, she executed the same given under my hand this the 27th day of July, 1892.
 J. A. Tallman
 Judge of Probate

I, P. S. Fitzgerald, Civil Engineer, hereby certify that the above plat is a correct map of a part of SW 1/4 of NW 1/4 of Section 9 Tp 12 R 6 E the property of M. A. Stocks as surveyed and subdivided by me. Gadsden, Ala. July 25, 1892.
 P. S. Fitzgerald
 Filed in office for record July 27th, 1892. Recorded July 28th, 1892.
 J. A. Tallman, Judge of Probate