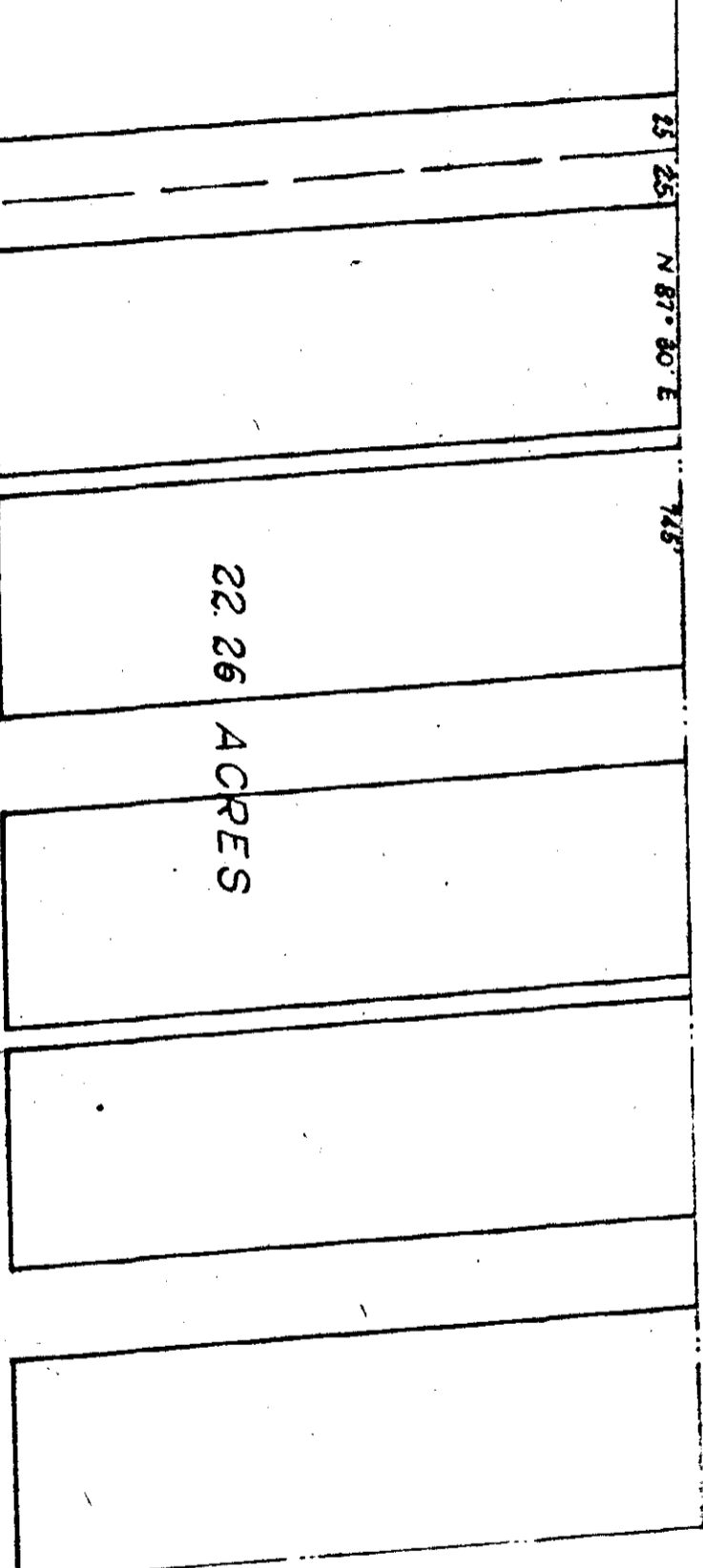


# WILSON DIVISION

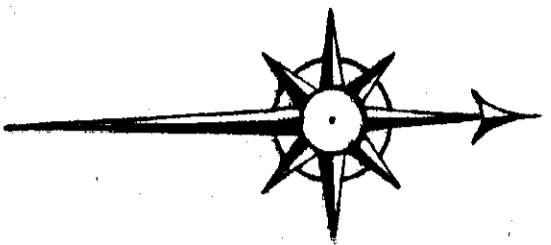
SE 1/4 - NW 1/4  
Sec 31 Tp 11 R 6 E

ALABAMA CITY, ALA.



ANNULLED  
VACATED

FOR INSTRUMENT  
OF VACATION SEE  
MISCL. B. PP. 124  
J. W. PENN  
PROBATE JUDGE



The State of Alabama, Etowah County  
 I, J. A. Tallman, Judge of Probate, hereby certify that T. S. Kyle, whose name is signed to the foregoing declaration and who is known to me, acknowledged before me on this day that being informed of the contents of the same, he executed the same voluntarily on the same bears date. Given under my hand this the 28th day of August, A. D., 1890.

J. A. Tallman, Judge of Probate

Etowah County, Alabama August 26, 1890  
 I, Thos. W. Lister, do hereby certify that this is a correct map as surveyed by me.

T. W. Lister, County Surveyor

I, T. S. Kyle, owner of the property, platted and subdivided by T. W. Lister, hereby ratify and adopt the same as correct. August 28th, 1890.

T. S. Kyle

Filed in office for record August 28, 1890. Recorded August 28, 1890 - J. A. Tallman, Judge of Probate