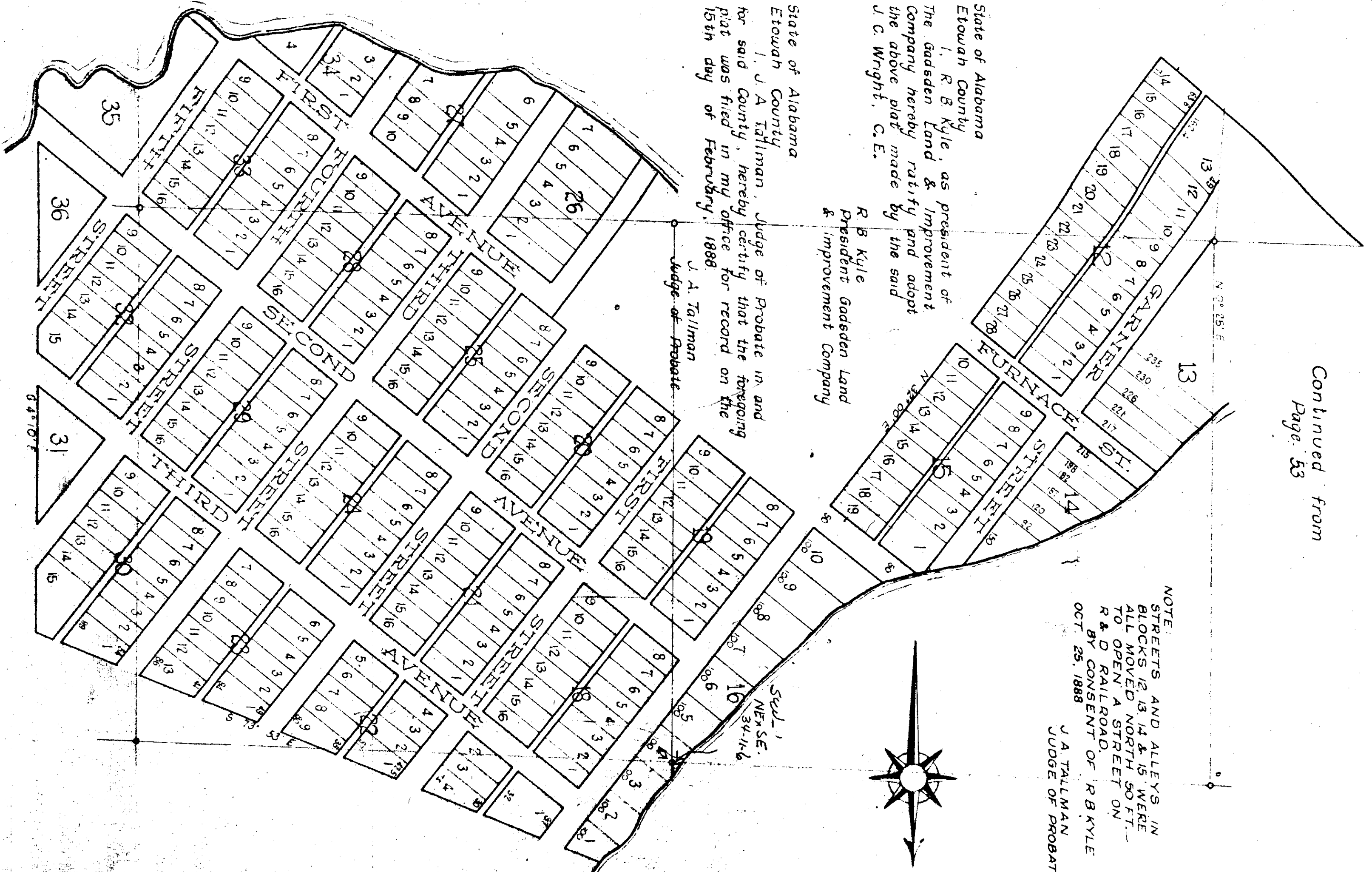


# MAP OF EWING GARNER TRACTS

Continued from  
Page 53



NOTE:  
STREETS AND ALLEYS IN  
BLOCKS 12, 13, 14 & 15 WERE  
ALL MOVED NORTH 50 FT.  
TO OPEN A STREET ON  
R. & D RAILROAD  
BY CONSENT OF R. B. KYLE  
OCT. 25, 1888  
J. A. TALLMAN  
JUDGE OF PROBATE

State of Alabama  
Etowah County  
I, R. B. Kyle, as president of  
The Gadsden Land & Improvement  
Company hereby ratify and adopt  
the above plat made by the said  
J. C. Wright, C. E.

R. B. Kyle  
President Gadsden Land  
& Improvement Company

State of Alabama  
Etowah County  
I, J. A. Tallman, Judge of Probate in and  
for said County, hereby certify that the foregoing  
plat was filed in my office for record on the  
15th day of February, 1888.

J. A. Tallman  
Judge of Probate